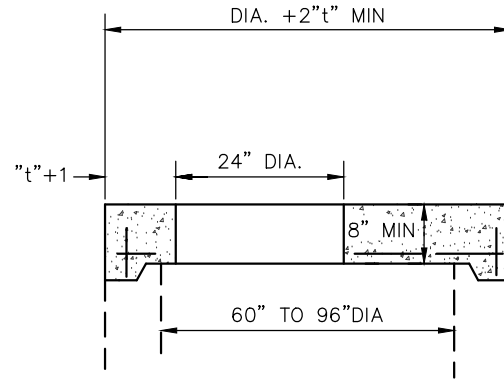
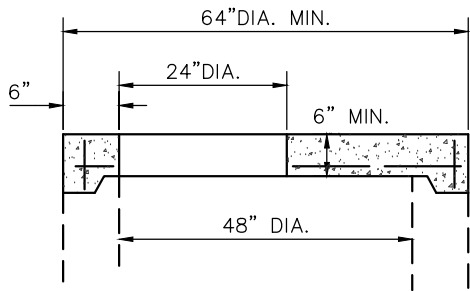


ECCENTRIC CONE TOP

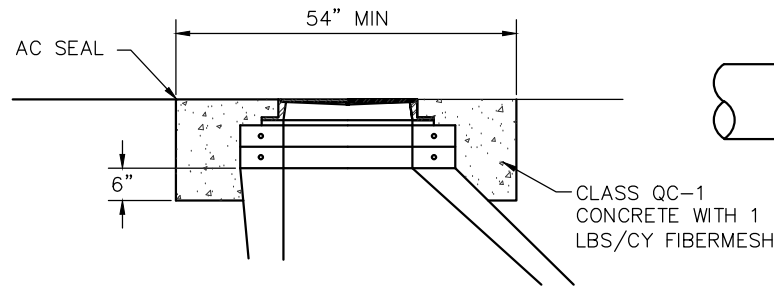


FLAT SLAB TOP

BASE I.D.	MIN "t"	MAX. PIPE SIZE
60"	5"	36"
72"	6"	48"
84"	7"	54"
90"	7 1/2"	60"
96"	8"	60"



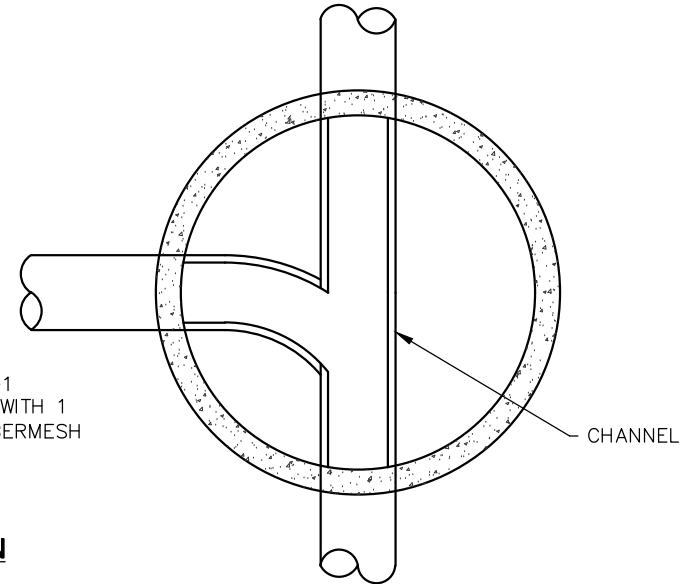
FLAT SLAB TOP



MANHOLE REPAIR CASTING CONSTRUCTION

NOTES:

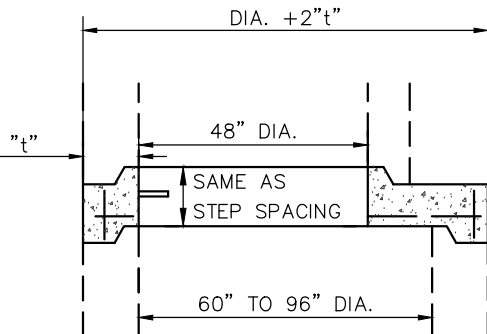
1. PRECAST CONCRETE ADJUSTING RINGS— ENCASE WITH CONCRETE 6" DOWN FROM BARREL TOP AND UP TO FLUSH WITH THE SURFACE. METAL ADJUSTING RINGS WILL NOT BE ALLOWED.
2. SET MANHOLE, PRECAST CONCRETE ADJUSTING RINGS AND CASTING THEN PAVE OVER MANHOLE. THEN DIG OUT, ENCASE COLLARS AND CASTING AS PER DETAIL WITH CONCRETE TO THE SURFACE.



SECTIONAL PLAN

NOTE

ALL INVERTS TO BE CHANNELLED FOR OPTIMUM FLOW.



FLAT SLAB TRANSITION