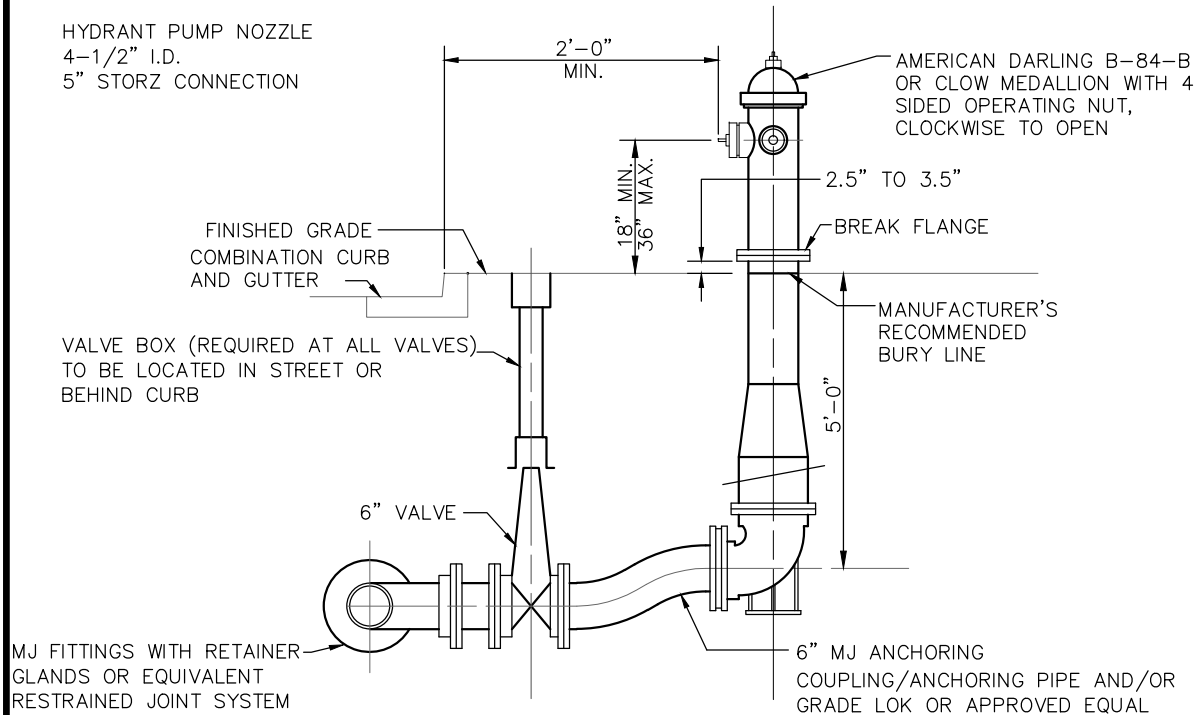


HYDRANT PUMP NOZZLE
4-1/2" I.D.
5" STORZ CONNECTION



SECTION VIEW

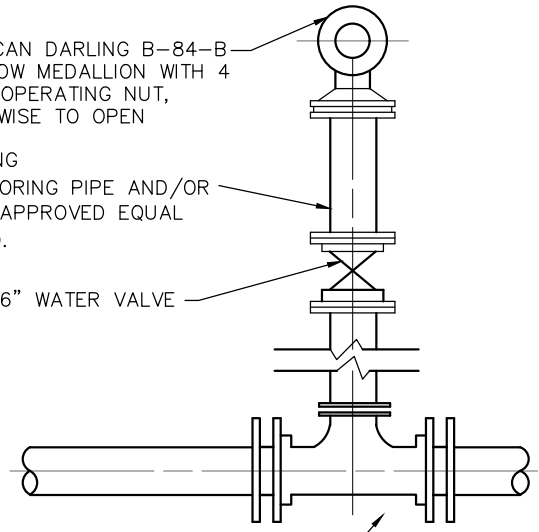
NOTES

- A.** FIRE HYDRANTS – AMERICAN DARLING B-84-B, CLOW MEDALLION, OR APPROVED EQUAL; MECHANICAL JOINT; TWO 2-1/2" HOSE NOZZLE WITH NATIONAL STANDARD THREAD CONNECTIONS; ONE 4"-1/2" PUMPER NOZZLE WITH 5" STORZ CONNECTION MANUFACTURED BY HARRINGTON OR APPROVED EQUAL; CONFORMING TO AWWA C-502; CW TO OPEN; BREAK FLANGES 3" ABOVE GRADE. HYDRANT SHALL BE YELLOW IN COLOR WITH 4-SIDED, SQUARE OPERATING NUT (7/8" TOP AND 1" BOTTOM DIMENSION). HYDRANT MUST BE SELF DRAINING.
- B.** GATE VALVES SHALL BE AWWA C-509, RESILIENT WEDGE, NONRISING STEM, MECHANICAL JOINT, 150 PSI WORKING PRESSURE, CW TO OPEN WITH ARROW INDICATING OPEN DIRECTION, MUELLER OR EQUIVALENT.
- C.** VALVE BOXES SHALL BE 2-PIECE, ADJUSTABLE 36" TO 48", 6" DIAMETER NOMINAL, ADJUSTABLE SCREW TYPE, COVER MARKED "WATER", DOMESTIC MADE ONLY.
- D.** ALL FITTINGS TO BE RESTRAINED.
- E.** ALL FITTINGS TO BE AWWA C-153 DUCTILE IRON, COMPACT.
- F.** ALL VALVES AND HYDRANTS SHALL OPEN RIGHT BY TURNING IN A CLOCKWISE DIRECTION.
- G.** CONTRACTOR TO FACE HYDRANT AS REQUIRED BY THE CITY.
- H.** THE LAYING OF PIPE ON EXISTING DIRT WITH THE BELLS CUT OUT SHALL NOT BE PERMITTED.
- I.** THE OPEN ENDS OF ALL PIPES AND SPECIAL CASTINGS SHALL BE PLUGGED OR OTHERWISE CLOSED WITH A WATERTIGHT PLUG TO THE APPROVAL OF THE CITY BEFORE LEAVING THE WORK FOR THE NIGHT.
- J.** A MINIMUM OF 4" WASHED STONE BACKFILL SHALL BE PLACED AS HYDRANT IS INSTALLED.

AMERICAN DARLING B-84-B
OR CLOW MEDALLION WITH 4
SIDED OPERATING NUT,
CLOCKWISE TO OPEN

6" MJ ANCHORING
COUPLING/ANCHORING PIPE AND/OR
GRADE LOK OR APPROVED EQUAL
(TYP.) REQUIRED.

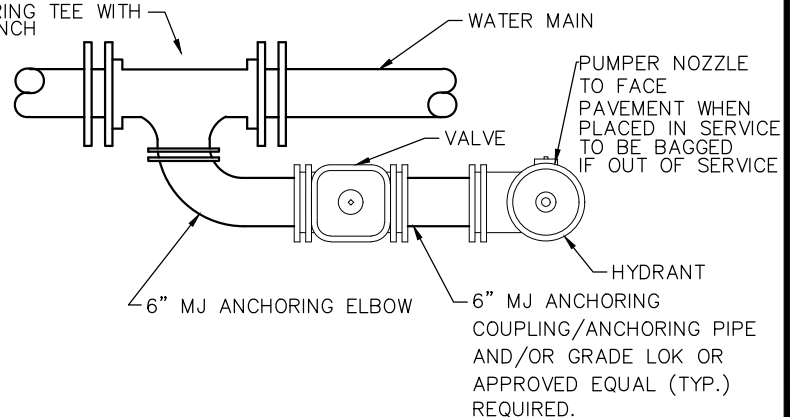
6" WATER VALVE



ANCHORING TEE WITH 6" BRANCH

BASIC TEE DETAIL PLAN

ANCHORING TEE WITH
6" BRANCH



**SPECIAL MECHANICAL JOINT
HYDRANT TEE DETAIL PLAN**

**CITY OF
URBANA**

FIRE HYDRANT

REVISIONS:
08-15-13
01-08-16
05-17-22

DATE
APPROVED:
01-13-06

PAGE No.
1167.51